

SLOT

Multi

ELECTRIC

Semi-Flush Omnidirectional Taxiway and Heliport Light

Compliances: ICAO Annex 14
NATO STANAG 3619
FAA AC 150/5345-46



Applications

The SLOT is a semi-flush light commonly used as taxiway and apron edge light, and heliport perimeter light, for both constant current and voltage circuits. It is suitable for use as FAA taxiway centerline intersection light too.

Features

BASE: made of a cast aluminum with two holes with threaded inserts for fastening the body by means of two screws and two studs, to prevent the rotation of the body due to aircraft wheel transit (mounting assembly B). The standard base is supplied complete with one cable lead, consisting of two, single-pole neoprene leads, size 2.5 sq.mm, 0.770 m long, with FAA L-823 receptacle.

Special bases without cable leads can be supplied on request, provided with holes suitable for conduit connections.

LIGHT UNIT: consists of a treated cast aluminum dome complete with a treated cast aluminum lower cover, fastened to the dome by means of three screws and silicone gasket. A pin located in the lower side of the dome ensures the proper mounting of the lower cover.

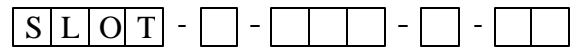
The dome mounts the optical system held in position by a ring, fixed to the dome by means of three screws, and silicone gasket. A silicone O-ring is placed between dome and ring for water tightness. No water builds up in front of the optical system, so the light output is not affected under heavy rainfall. An additional silicone O-ring is outside placed around the dome to avoid dirt deposits between dome and mounting assembly. The lower cover is provided with a gland for cable entry and with valve for water tightness test. Two suitable seats are provided on the dome to make easy the light removal.

How to order

To the basic part number add the color, the lamp type and the mounting assembly. If required any option can be added.

EXAMPLE

SLOT-B-045-B is an omnidirectional taxiway edge light, with a blue filter and a 48 W reflectorized lamp, 6.6 A, complete with standard shallow base, without any Lamp By-pass device.



Basic Part Number :

Colour :

- C = Clear
- B = Blue
- Y = Yellow
- R = Red
- G = Green

Lamp Type :

- 045= 1x48W 6.6A Reflectorized
- 050= 1x50W 12V Reflectorized
- 100= 105W 6.6A Reflectorized

Mounting Assembly :

- B = Standard Shallow Base
- R = 12" Adaptor Ring
- O = No Mounting Assembly

Options :

- *F = Fuse Cutout
- *E = Electronic Cutout Relay
- * In case of series circuits only.

TABLE A

SPECS	APPLICATION	COLOURS		
		BLUE	YELLOW	CLEAR
ICAO STANAG FAA	Taxiway Edge	48W 6.6A		
FAA (L-852E)	Taxiway Intersection		105W 6.6A	
ICAO STANAG	Heliport Perimeter		48W 6.6A 50W 12V	
ICAO	Heliport FATO and Aiming Point			105W 6.6A

OPTICAL SYSTEM: consists of two optical clear glass lenses, to optimize the candlepower distribution. The internal surface of the outer lens is prismatic; the external is completely smooth for easy maintenance. Both lenses are mounted in the dome through a suitably shaped silicone gasket and fastened to it by means of a ring. The dome is provided with a seat to house the colored filter and mounts the lamp-filter support too.

CABLE LEAD: consists of two, single-pole santoprene leads, size 2.5 sq.mm, 0.370 m long, with FAA L-823 plug, for very quick coupling with the receptacle mounted on the base. The leads are equipped with female fasten terminal and protected by fiberglass silicone sheath.

LAMP: 48 W or 105 W, 6.6 A, tungsten-halogen, 1500 or 1000 hour rated life respectively, complete with dichroic reflector and cable leads with male fast-on terminal; 50 W, 12 V, tungsten-halogen, 4000 hour rated life, complete with dichroic reflector and GU5.3 lamp-holder with male fast-on terminals. The lamp is mounted on a suitable aluminum support, through an elastic mounting for easy and quick re-lamping. Refer to TABLE A on page AT-27.1 for the correct lamp rating.

FILTER: (when required) blue, yellow, green or red, in dichroic features. The filter, complete with two silicone gaskets to avoid the glass-metal direct contact, is mounted in the rearside of the lenses, on the dome, held in position by the lamp-filter support.

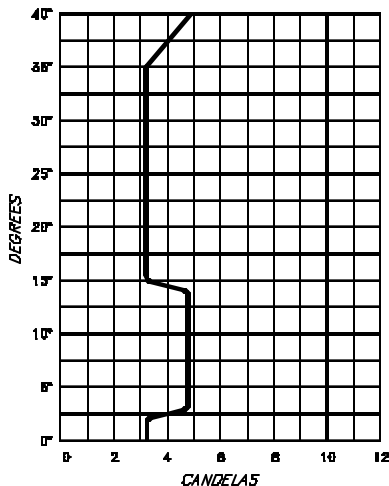
LAMP BY-PASS DEVICE: on request, the fitting can be equipped with fuse cutout (option F) mounted on a suitable insulated strip fixed to the lower cover, or with electronic cutout relay (option E) directly fixed to the lower cover.

GROUNDING: a suitable screw is provided outside the base; a grounding wire with fast-on connection is provided between light unit and base.

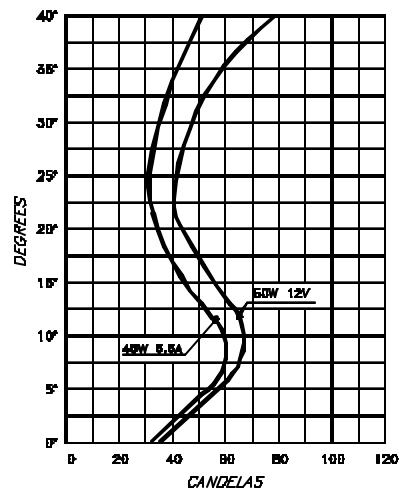
ALTERNATIVE SUPPLIES: the lights can be fitted with an adaptor ring for mounting on bases, 12" dia. (mounting assembly R).

Technical Data

- Candlepower distribution 48W 6.6A lamp
- Blue light



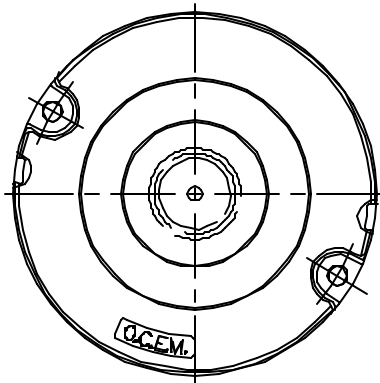
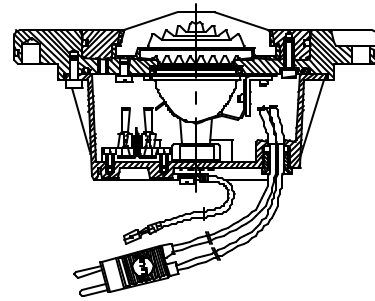
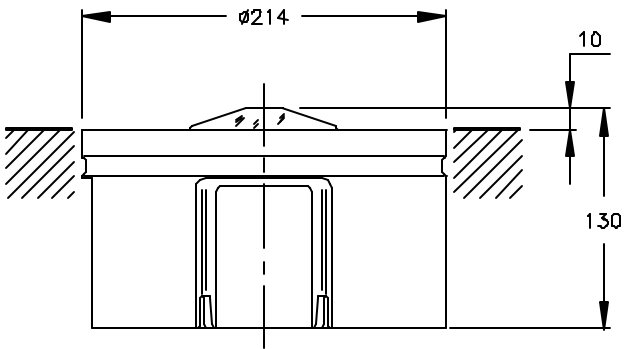
- Candlepower distributions 48W 6.6A and 50W 12V lamps
- Yellow light



Instruction Manual: UT-MT-224

	Light Unit	Shallow Base	Light Unit (2P) & Shallow Base	Light Unit (2P) & Adaptor Ring
Shipping Weight	2.8 Kg	3.2 Kg	5.65 Kg	5.95 Kg

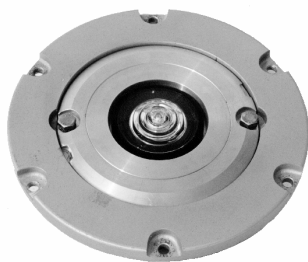
Outline Drawings



Dimensions are in mm



Light Unit with Shallow



Light Unit with Adaptor

Accessories

Part Number	Description
011.2050	Transformer for series circuits FAA L-831 30/45 W 6.6/6.6 A
011.2001	Transformer for series circuits FAA L-831 30/45 W 6.6/6.6 A, suitable for secondary grounding
011.2052	Transformer for series circuits FAA L-831 100 W 6.6/6.6 A
011.2002	Transformer for series circuits FAA L-831 100 W 6.6/6.6 A, suitable for secondary grounding
011.2056	Transformer for series circuits FAA L-831 200 W 6.6/6.6 A
011.2003	Transformer for series circuits FAA L-831 200 W 6.6/6.6 A, suitable for secondary grounding
011.1509	Transformer for parallel circuits 50W, 220/12V
011.1510	Transformer for parallel circuits 50W, 380/12V
011.1511	Transformer for parallel circuits 100W, 220/15V
011.1512	Transformer for parallel circuits 100W, 380/15V
011.2559	54-E6-E6 Connector kit L-823, 10-12 AWG (6 sq.mm), 0.42" to 0.585" O.D.
011.2558	54-E4-E4 Connector kit L-823, 8 AWG (10 sq.mm), 0.42" to 0.585" O.D.
315.1229*	Base L-868, Class I, Size B, 24" deep
315.1420	Flange ring with retaining ring for L-868 base, size B, with O-ring and bolts
152.6110	Shallow base, dia. 8", one cable lead, with gasket and hardware for light unit fastening
152.8110	Shallow base, dia. 12", one cable lead, with gasket and hardware for light unit (with adaptor ring) fastening
712.1012	Setting material for shallow base, 5 lt
712.1013	Setting material for shallow base, 20 lt
332.3040	Positioning jig for shallow base, dia. 8", installation
332.3440	Positioning jig for shallow base, dia. 12", installation
738.2001	Linear level
332.4140	Lifting tool for light unit removal (for proper operation 2 tools need)

* Sectional bases may be required depending upon the paving technique.

Renewal Parts

Part Number	Description
152.1020	Dome complete with optical system
152.1040	Lower cover complete with cable lead with plug
152.1010	Complete lamp-filter support
760.2186	48 W tungsten-halogen lamp, 6.6 A, with dichroic reflector
760.2190	105 W tungsten-halogen lamp, 6.6 A, with dichroic reflector
760.2065	50 W tungsten-halogen lamp, 12 V, GU 5.3 base, with dichroic reflector
152.1030	GU 5.3 lamp holder with male fast-on terminals
318.8236	Dichroic blue filter
318.8220	Dichroic yellow filter
318.8240	Dichroic green filter
318.8250	Dichroic red filter
325.8070	Silicone gasket for filter
317.4210	Outer lens
317.4220	Inner lens
325.0320	Silicone gasket for lenses
758.2007	Silicone O-ring for light unit (between dome and lower cover)
758.2014	Silicone O-ring for dome
758.2007	Silicone O-ring for lens ring
758.2008	Silicone gasket for mounting assembly
752.1001	Silicone grease for gaskets, 100 gr
000.1466	Fuse cutout
329.3070	Insulated strip for fuse cutout
202.0010	Electronic cutout relay
786.7045	Valve for water tightness test
323.2455	L-823 two-pole plug with cable leads, 0.370 m long
325.3474	Gasket for cable gland
712.0017	Instantaneous adhesive for cable lead with plug, 20 gr
323.2610	L-823 two-pole receptacle with cable leads, 0.770 m long
712.0004	Anaerobic adhesive, medium type, for screws, 50 cc
752.0003	Screw paste, 100 gr
152.6045	Hardware kit for light unit fastening to shallow base, dia. 8": 700.2228 - M10x30 stainless steel HH screw (2 pieces) 706.1106 - Stainless steel elastic washer for M10 screw (2 pieces) 706.5206 - Nylon washer for M10 screw (2 pieces)
152.8060	Hardware kit for light unit fastening (with adaptor ring) to shallow base, dia. 12": 700.2228 - M10x30 stainless steel HH screw (62 pieces) 706.1106 - Stainless steel elastic washer for M10 screw (6 pieces) 706.5206 - Nylon washer for M10 screw (6 pieces)

Multi

ELECTRIC

4223 W Lake Street • Chicago, IL 60624
Tel: (773) 722-1900 • Fax: (773) 722-5694
Email: sales@multielectric.com