

SLRE

Semi-Flush Runway Edge Light

Multi
ELECTRIC



SLRE

Compliances: ICAO Annex 14
NATO STANAG 3316
FAA AC 150/5345-46

Applications

The SLRE is a semi-flush runway edge light that may be used for any category I, II and III ICAO, FAA and military runway. This fitting does double duty as FAA runway threshold/end light.

Features

BASE: made of a cast aluminum with six holes with threaded inserts for fastening the light unit by means of six screws (mounting assembly B). The standard base is supplied complete with one or two cable leads, each consisting of two, single-pole santoprene leads, size 2.5sq.mm, 0.770 m long, with FAA L-823 receptacle. On request, special bases without cable leads can be supplied provided with holes suitable for conduit connections.

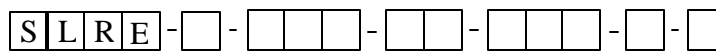
LIGHT UNIT: consists of a treated cast aluminum dome and a treated cast aluminum lower cover, fastened to the dome by means of three screws and silicone gasket. A pin located in the lower side of the dome ensures the proper mounting of the lower cover. The dome is provided with two opposite asymmetric apertures for opposite beam outputs (see colors selection note on this page and outline drawings on page AT-20.2 for more details). Unidirectional light units are equipped with an aluminum screen, mounted in the rear side of a prism. An additional silicone O-ring is outside placed around the dome to avoid dirt deposits between dome and mounting assembly. The lower cover is provided with one or two glands for cable entry and with a valve for watertightness test. Two suitable seats are provided on the dome to make easy the light removal.

How to order

To the basic part number add the optical assembly, the color for both sides, the electrical system, the lamp type and the mounting assembly. If required, any option can be added.

EXAMPLE:

SLRE-S-CYP-2P-200-B is a bi-directional runway edge light, conforming to STANAG Specs and ICAO Specs for 45 m runway, with left side clear and right side (central beam*) yellow, two cable leads with plug, two 105 W reflectorized lamps 6.6A, complete with standard shallow base, without any lamp by-pass device.



Basic Part Number:

Optical Assembly:

I = ICAO 60m
S = STANAG - ICAO 45m - FAA
A = FAA Threshold/End

Colour(Left Side)/Colour(Right Side):*

C = Clear
Y = Yellow
R = Red
G = Green
X = Blank

Electrical System:

1P = One Cable Lead
2P = Two Cable Leads

Lamp Type :

100= 1x105W 6.6A Reflectorized
200= 2x105W 6.6A Reflectorized

Mounting Assembly :

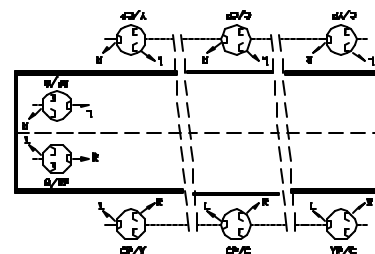
B = Standard Shallow Base
O = No Mounting Assembly

Options :

F = Fuse Cutout(s)
E = Electronic Cutout Relay(s)

* Color selection

Install all lights so to have the central beam pointed towards the same landing direction. The color of the central beam must be followed by a "P".



OPTICAL SYSTEM: consists of two opposite optical glass prisms, one for each landing direction; each prism is mechanically clamped to the light dome by means of a steel retainer with silicone gasket. An additional nylon gasket is placed between each retainer and the relevant prism, to avoid glass-metal direct contact. The prism replacement is quick and easy and doesn't require any sealing. No water builds up in front of the prisms, so the light output is not affected under heavy rainfall.

CABLE LEAD(S): one or two according to customer requirement. Each cable lead consists of two, single-pole santoprene leads, size 2.5 sq. mm, 0.700 m long, with FAA L-823 plug, for very quick coupling with the receptacle(s) mounted on the base.

The leads are equipped with female fast-on terminal and protected by fiberglass silicone sheath.

LAMP(S): one for unidirectional light, two for bi-directional light. The lamps are 105 W, tungsten-halogen, 6.6A, 1000 hour rated life, complete with dichroic reflector and cable leads with male fast-on terminal. The lamps are mounted on a suitable aluminum plate, providing the required toe-in, through elastic supports for easy and quick re-lamping. The lamp plate is fixed to the lower cover through four vibration-damping blocks. Two tinned bare copper plaits are provided between the lamp plate and the lower cover (through thermo conductive paste) to improve the heat removal.

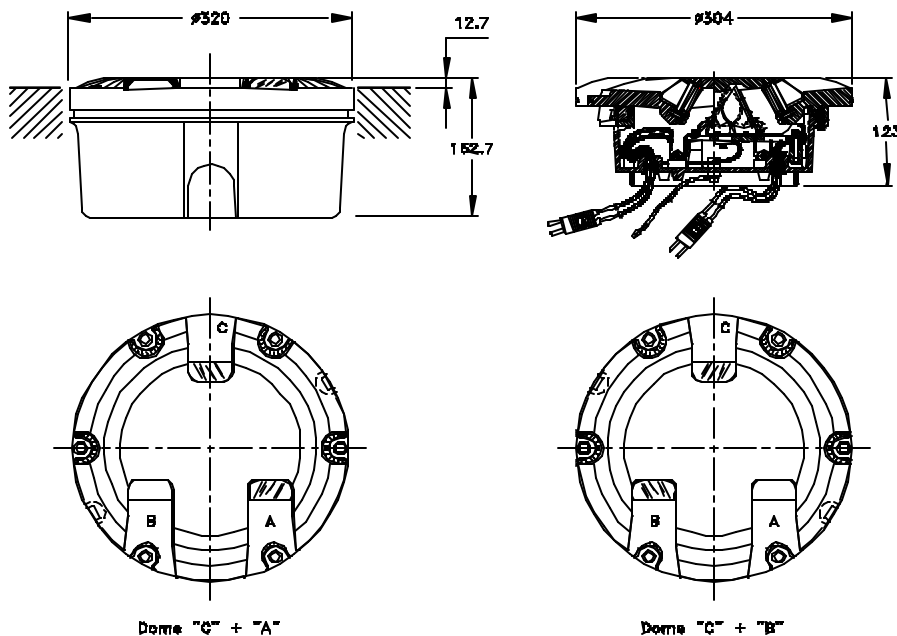
FILTER(S): (when required) one or two,

dichroic yellow, red and/or green, is(are) mounted in the rear side of the prism(s) through suitable stainless steel support(s).

LAMP BY-PASS DEVICE(S): on request, the fitting can be equipped with two fuse cutouts (option F) mounted on suitable insulated strips fixed to the lower cover, or with two electronic cutout relays (option E) directly fixed to the lower cover. Unidirectional light mounts one lamp by-pass device only.

GROUNDING: a suitable screw is provided outside the base; a grounding wire with fast-on connection is provided between light unit and base.

Outline Drawings



One of the two apertures is always centered on the dome axis, identified by mark "C"; the relevant beam is called "central beam". Generally the lights are installed so to have the central beam pointed towards the same landing direction.

Due to the asymmetric window configuration, the light units placed on the runway left side will be different to those for right side, so to have the "not-centered" luminous beam always close to runway edge. Therefore two different dome castings are available:

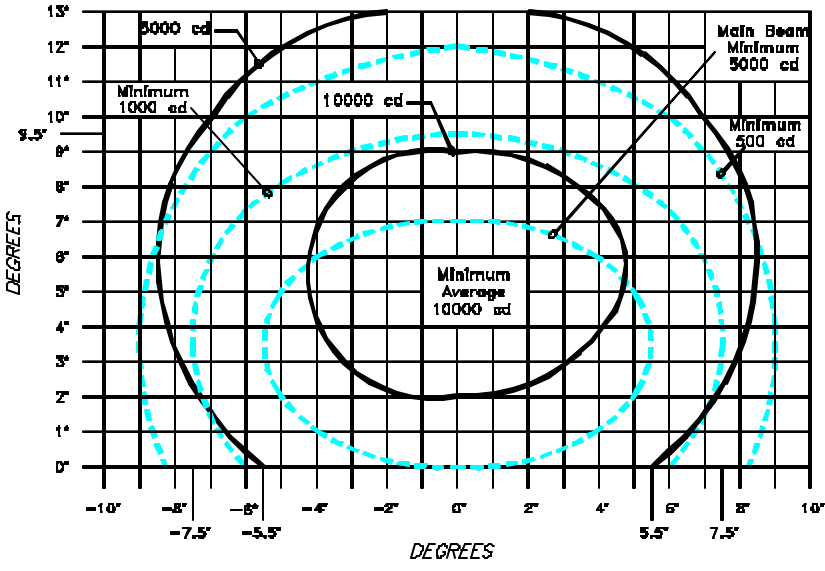
- dome with apertures identified by mark "C" + "A"
- dome with apertures identified by mark "C" + "B"

Dimensions in mm

Instruction Manual: UT-MT-166

	Light Unit (2 plugs)	Shallow Base (2 sockets)	Light Unit (2P)& Shallow Base
Shipping Weight	7.5 Kg	7.3 Kg	13.9 Kg

Technical Data



Light Unit Data		Main Beam Data	
Use:	Runway Edge, ICAO	Average:	10500 cd
Lamp:	105W 6.6A Reflectorized	Minimum:	7900 cd
Colour:	Clear	Maximum:	13500 cd

Accessories

Part Number	Description
011.2052	Transformer for series circuits FAA L-831 100 W 6.6/6.6 A
011.2002	Transformer for series circuits FAA L-831 100 W 6.6/6.6 A, suitable for secondary grounding
011.2056	Transformer for series circuits FAA L-831 200 W 6.6/6.6 A
011.2003	Transformer for series circuits FAA L-831 200 W 6.6/6.6 A, suitable for secondary grounding
011.2559	54-E6-E6 Connector kit L-823, 10-12 AWG (6 sq.mm), 0.42" to 0.585" O.D.
011.2558	54-E4-E4 Connector kit L-823, 8 AWG (10 sq.mm), 0.42" to 0.585" O.D.
315.1229*	Base L-868, Class I, Size B, 24" deep
315.1420	Flange ring with retaining ring for L-868 base, size B, with O-ring and bolts
152.8110	Shallow base, dia. 12", one cable lead, with gasket and hardware for light unit fastening
153.1110	Shallow base, dia. 12", two cable leads, with gasket and hardware for light unit fastening
712.1012	Setting material for shallow base, 5 lt
712.1013	Setting material for shallow base, 20 lt
332.3440	Positioning jig for shallow base installation
738.2001	Linear level
332.4140	Lifting tool for light unit removal (two tools need for proper operation)

* Sectional bases may be required depending upon the paving technique.

Renewal Parts

Part Number	Description
152.9000	Dome complete with prisms ("C" + "A") for runway edge lights
152.9050	Dome complete with prisms ("C" + "B") for runway edge lights
152.9120	Dome complete with prisms ("C" + "A") for runway threshold/end lights
152.9130	Dome complete with prisms ("C" + "B") for runway threshold/end lights
152.9010	Lower cover complete with two cable leads with plug
152.8050	Lower cover complete with one cable lead with plug
152.9020	Complete lamp supporting plate, for ICAO 45 m, STANAG and FAA runway edge lights ("C" + "A")
152.9080	Complete lamp supporting plate, for ICAO 45 m, STANAG and FAA runway edge lights ("C" + "B")
152.9030	Complete lamp supporting plate, for ICAO 60 m runway edge lights ("C" + "A")
152.9090	Complete lamp supporting plate, for ICAO 60 m runway edge lights ("C" + "B")
152.9140	Complete lamp supporting plate, for FAA threshold/end lights ("C" + "A")
152.9150	Complete lamp supporting plate, for FAA threshold/end lights ("C" + "B")
152.8080	Vibration-damping block with hardware
760.2190	105 W tungsten-halogen lamp, 6.6 A, with dichroic reflector
152.9040	Dichroic yellow filter complete with support
152.7190	Dichroic red filter complete with support
153.0040	Dichroic green filter complete with support
341.0830	Aluminium screen for unidirectional light
318.1140	Glass prism
325.0310	Silicone gasket for prism
325.8010	Nylon gasket for prism
758.2017	Silicone O-ring for light unit (between dome and lower cover)
758.2016	Silicone O-ring for dome
325.2000	Silicone O-ring for mounting assembly
752.1001	Silicone grease for gaskets, 500gr
000.1466	Fuse cutout
329.3070	Insulated strip for fuse cutout
202.0010	Electronic cutout relay
786.7045	Valve for watertightness test
323.2465	L-823 two-pole plug with cable leads, 0.700 m long
325.3474	Gasket for cable gland
712.0017	Instantaneous adhesive for cable lead with plug, 20gr
323.2610	L-823 two-pole receptacle with cable leads, 0.770 m long
712.0004	Anaerobic adhesive, medium type, for screws, 50 cc
752.0003	Screw paste, 100gr
752.1011	Thermoconductive paste, 100gr
152.8060	Hardware kit for light unit fastening: 700.2228 - M10x30 stainless steel HH screw (6 pieces) 706.1106 - Stainless steel elastic washer for M10 screw (6 pieces) 706.5206 - Nylon washer for M10 screw (6 pieces)

Multi

ELECTRIC

4223 W Lake Street • Chicago, IL 60624
Tel: (773) 722-1900 • Fax: (773) 722-5694
Email: sales@multielectric.com
URL: <http://www.multielectric.com>

We reserve the right to change design or specification data without notice